

Are you looking out over your property and personnel?

ip-LOOKOUT Monitoring Station by ControlByNet

Manage and secure your sites with our network-based software platform.

ip-LOOKOUT provides a central, yet mobile, monitoring station for an organization's i-flashback or i-flashback REMOTE software solutions. Multiple remote sites are easily handled from a single station. Alerts are configured on the remote server(s) and sent to the monitoring station for action. Motion alarms immediately display on the screen, showing both live view and the most recent video archives. Management or a guard adds notes to alerts for future review. All traffic is TCP/IP, allowing flexibility without fear of network complexity.

The ip-LOOKOUT monitoring station is a stand-alone system running on a typical Windows installation, using any standard wide-screen LCD monitors. Used alone or in tandem with ControlByNet's full-time viewing software it makes an effective tool for remote management and surveillance of properties.

ip-LOOKOUT is configured around a dual-LCD system with distinct areas.

Observation Area:

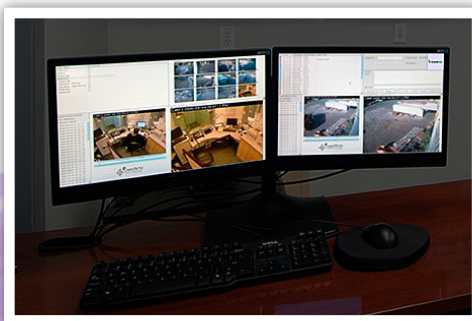
This area allows the user to flip between sites to quickly look at cameras and recorded videos.

- Listing of Monitored Sites
- Display of Cameras at Selected Site
- Live View of Selected Camera
- List of Motion Archives
- Playback Window of Videos

Alert Area:

The alert area is the active screen of the system.

- Column of Recent Alarms
- Notes Area to Dismiss or Flag Event
- Live View Displays on Alert
- List of Archived Videos is Displayed
- Playback Window of Alert



Actual Customer Site

